

One Call

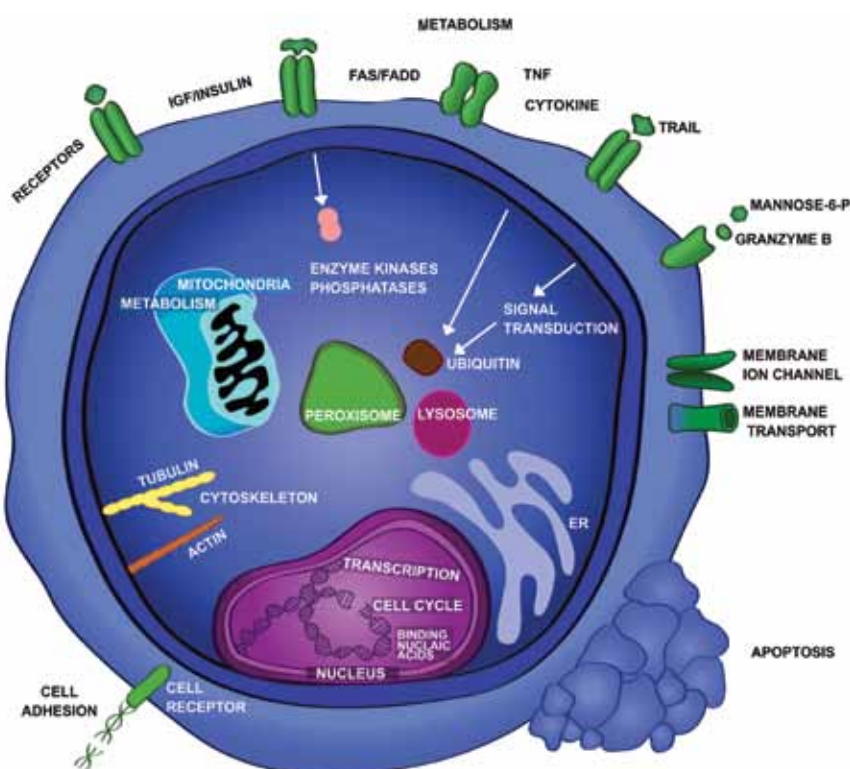
NEW PRODUCTS

MPBio/mAb Monoclonal Antibodies

One Source

5,400 Antibodies Against Targets Inside and Outside The Cell
Purified • Application Tested • Quality Guaranteed

A World of
Antibodies



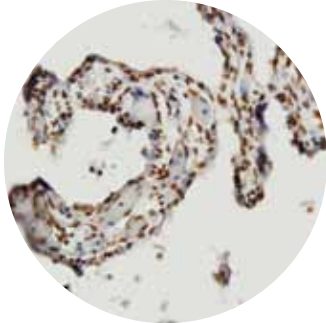
Use Antibody Navigator at www.mpbio.com/mAb to
Search A Complete List of New Monoclonal Antibodies

www.mpbio.com/antibodies

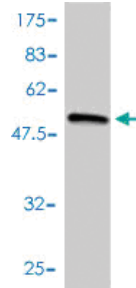
MP Biomedicals Europe, Tel: 00800 7777 9999 • Fax: 00800 6666 8888



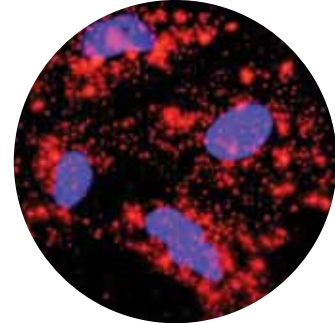
High Throughput Monoclonal Antibodies



Immunohistochemistry of formalin-fixed, paraffin sections



Western blot



In situ Proximity Ligation Assay

MPBio/mAb Antibodies are Highly Specific

- Immunogens based on gene sequence
- Immunogens expressed using DNA recombinant technology

Synthetic Peptide Immunogen Copies the Native Protein

- Uses an in-vitro wheat germ to express the immunogens
- The expressed peptide mirrors the conformation and folding of the native protein

MPBio/mAb Have High Sensitivity

- Combination of low dose immunization techniques and use of a proprietary adjuvant

Antibodies are Highly Purified to Eliminate Non-Specific Reactions

- Antibodies purified from the culture supernatant using Protein A chromatography
- Purifies antibody away from unwanted proteins

Visit www.mpbio.com/antibodies for additional technical information:

- Antibodies tested in appropriate cell lines and tissues
- Each antibody is extensively application tested
- Dilutions recommended for each application

All of this adds up to high specificity and sensitivity which will provide dependable results.

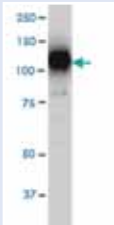


Use Antibody Navigator at www.mpbio.com/mAb to Search A Complete List of New Monoclonal Antibodies

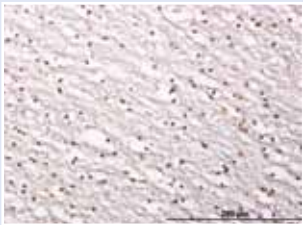
Epigenetics

Cat#	Description	Applications
A023028	Anti-amine oxidase (flavin containing) domain 2	IHC-P,S ELISA,WB
A001786	Anti-DNA (cytosine-5-)-methyltransferase 1	ELISA,WB
A084444	Anti-DOT1-like, histone H3 methyltransferase (<i>S. cerevisiae</i>)	S-ELISA,WB
A079813	Anti-euchromatic histone-lysine N-methyltransferase 1	ELISA,IF,WB
A080204	Anti-F-box protein 11	IHC-P,S-ELISA,WB
A003021	Anti-H3 histone, family 3B (H3.3B)	ELISA,IF,IHC-P,WB
A008349	Anti-histone cluster 2, H2be	S-ELISA
A008841	Anti-histone deacetylase 3	ELISA,IF,WB
A010014	Anti-histone deacetylase 5	IF,S-ELISA,WB
A010013	Anti-histone deacetylase 6	ELISA,WB
A055869	Anti-histone deacetylase 8	IF,S-ELISA,WB
A009734	Anti-histone deacetylase 9	S-ELISA
A007923	Anti-hydroxysteroid (17-beta) dehydrogenase 8	ELISA,WB
A002648	Anti-K(lysine) acetyltransferase 2A	ELISA,IF,WB
A057106	Anti-N-acetyltransferase 14 (GCN5-related, putative)	ELISA,WB
A051126	Anti-N-acetyltransferase 5 (GCN5-related, putative)	ELISA,WB
A004809	Anti-NHP2 non-histone chromosome protein 2-like 1 (<i>S. cerevisiae</i>)	S-ELISA
A004686	Anti-nuclear cap binding protein subunit 1, 80kDa	S-ELISA,WB
A022916	Anti-nuclear cap binding protein subunit 2, 20kDa	ELISA
A005093	Anti-poly(rC) binding protein 1	ELISA
A010196	Anti-protein arginine methyltransferase 3	ELISA,WB
A006045	Anti-ring finger protein 2	RNAi-Ab,S-ELISA,WB
A080854	Anti-SET domain containing (lysine methyltransferase) 7	ELISA,IF,WB

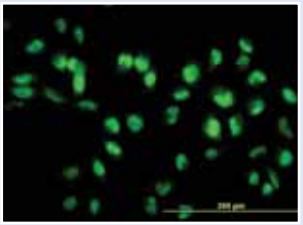
Cat#	Description	Applications
A023411	Anti-sirtuin (silent mating type information regulation 2 homolog) 1 (<i>S. cerevisiae</i>) (SIRT1)	IF,IHC-P,S-ELISA,WB



SIRT1 monoclonal antibody, clone 7B7 Western Blot analysis of SIRT1 expression in HeLa NE.



Immunoperoxidase of monoclonal antibody to SIRT1 on formalin-fixed paraffin-embedded human lateral ventricle wall. [antibody concentration 1 µg/ml]



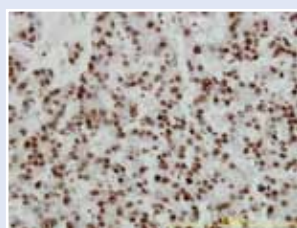
Immunofluorescence of monoclonal antibody to SIRT1 on HeLa cell. [antibody concentration 10 µg/ml]

Abbreviations IF: Immunofluorescence, IHC-Fr: Immunohistochemistry (Frozen sections), IHC-P:Immunohistochemistry (Formalin/PFA-fixed paraffin-embedded sections), PLA: in situ Proximity Ligation Assay, RNA-Ab: RNAi Knockdown (Antibody validated), S-ELISA: Sandwich-ELISA, WB: Western Blot.

Nucleic Acid Binding

Cat#	Description	Applications
A065057	Anti-adrenocortical dysplasia homolog (mouse)	ELISA,IF,IHC-P,WB
A000302	Anti-annexin A2	IF,RNAi-Ab,S ELISA,WB
A057492	Anti-AT rich interactive domain 1B (SWI1-like)	IF,IHC-P,S-ELISA,WB
A008815	Anti-barrier to autointegration factor 1	IHC-P,S-ELISA,WB
A010669	Anti-cell growth regulator with EF-hand domain 1	S-ELISA,WB
A051692	Anti-cleavage and polyadenylation specific factor 3, 73kDa	IF,S-ELISA,WB
A001656	Anti-DEAD (Asp-Glu-Ala-Asp) box polypeptide 6	IHC-P,RNAi-Ab,S-ELISA,WB
A373863	Anti-dead end homolog 1 (zebrafish)	ELISA,WB
A001660	Anti-DEAH (Asp-Glu-Ala-His) box polypeptide 9	IF,IHC-P,S-ELISA,WB
A001774	Anti-deoxyribonuclease I-like 1	S-ELISA,WB
A010059	Anti-dynamin 1-like	IHC-P,S-ELISA,WB
A030845	Anti-EH-domain containing 3	IF,IHC-P,S-ELISA,WB
A002023	Anti-enolase 1, (alpha)	IF,IHC-P,S-ELISA,WB
A001965	Anti-eukaryotic translation initiation factor 2, subunit 1 alpha, 35kDa	IF,RNAi-Ab,S-ELISA,WB
A005610	Anti-eukaryotic translation initiation factor 2-alpha kinase 2	IF,IHC-P,S-ELISA,WB
A027161	Anti-eukaryotic translation initiation factor 2C, 2	IF,IHC-P,RNAi-Ab,WB
A002130	Anti-Ewing sarcoma breakpoint region 1	IHC-P,S-ELISA,WB
A051010	Anti-exosome component 3	IHC-P,S-ELISA,WB
A002189	Anti-Fanconi anemia, complementation group G	IF,RNAi-Ab,S-ELISA,WB
A002332	Anti-fragile X mental retardation 1	RNAi-Ab,S-ELISA,WB
A005859	Anti-glutaminyI-tRNA synthetase	IHC-P,S-ELISA,WB
A003280	Anti-hairy and enhancer of split 1, (Drosophila)	S-ELISA,WB
A003304	Anti-heat shock 70kDa protein 1B	IF,IHC-P,PLA,S-ELISA,WB
A008091	Anti-high mobility group AT-hook 2	IF,S-ELISA,WB

Cat#	Description	Applications
A003146	Anti-high-mobility group box 1 (HMGB1)	IF,IHC-P,S-ELISA,WB



Immunoperoxidase of monoclonal antibody to HMGB1 on formalin-fixed paraffin-embedded human hepatocellular carcinoma tissue. [antibody concentration 3 µg/ml]

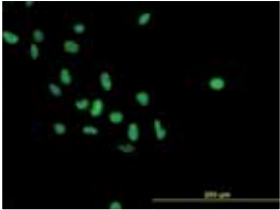


Immunofluorescence of monoclonal antibody to HMGB1 on HeLa cell. [antibody concentration 10 µg/ml]

Following kidney transplantation, delayed graft function (DGF) can occur with incidences as high as 50%. Kruger, et. al. used Anti-HMGB1 and Anti-TLR4 (Cat# A007099, see p. 12) in immunohistochemistry on paraffin sections to show that these proteins may contribute to the development of ischemia/reperfusion injury caused by DGF. (Kruger, et.a l., 2009 Mar 3;106(9):3390-5)

Nucleic Acid Binding

Cat#	Description	Applications
A055669	Anti-mitofusin 1	ELISA, RNAi-Ab, WB
A009927	Anti-mitofusin 2	IHC-P, RNAi-Ab, S-ELISA, WB
A004350	Anti-N-methylpurine-DNA glycosylase	IF, IHC-P, S-ELISA, WB
A079991	Anti-oligonucleotide/oligosaccharide-binding fold containing 1	S-ELISA, WB
A005037	Anti-phosphatidylethanolamine binding protein 1	S-ELISA, WB
A005105	Anti-phosphoenolpyruvate carboxykinase 1 (soluble)	IF, S-ELISA, WB

Cat#	Description	Applications
A000142	Anti-poly (ADP-ribose) polymerase 1 (PARP1)	IF, S-ELISA, WB
 <p><i>Immunofluorescence of monoclonal antibody to PARP1 on HeLa cells. [antibody concentration 10 µg/ml]</i></p> <p>Crawford, et. al. report on the interaction of PARP1 (Cat# A000142), CSDA (Cat# A008531, see p. 5), and TRIM28 (Cat# A010155, see p. 9) with a metastasis susceptibility gene, Rrp1b. Antibodies to these proteins were used in immunoprecipitation and immuno-fluorescence. Reference: Crawford, et. al., JBC 2009, Oct. 16;284(42):28660-73.</p>		

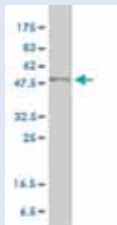
A005430	Anti-polymerase (RNA) II (DNA directed) polypeptide A, 220kDa	ELISA, WB-Ce, WB
A005438	Anti-polymerase (RNA) II (DNA directed) polypeptide I, 14.5kDa	ELISA, S-ELISA, WB
A005629	Anti-prospero homeobox 1	IHC-P, S-ELISA, WB
A005704	Anti-proteasome (prosome, macropain) 26S subunit, ATPase, 4	IF, IHC-P, S-ELISA, WB
A006193	Anti-ribosomal protein S5	ELISA, IF, S-ELISA, WB
A006201	Anti-ribosomal protein S7	IF, IHC-P, S-ELISA, WB
A057167	Anti-sal-like 4 (Drosophila)	IHC-P, S-ELISA, WB
A026135	Anti-SERPINE1 mRNA binding protein 1	IF, S-ELISA, WB
A009869	Anti-SET domain, bifurcated 1	IF, S-ELISA, WB
A006730	Anti-signal recognition particle 68kDa	ELISA, IF, WB
A023411	Anti-sirtuin (silent mating type information regulation 2 homolog) 1	IF, IHC-P, S-ELISA, WB
A004087	Anti-SMAD family member 2	ELISA
A006626	Anti-small nuclear ribonucleoprotein polypeptide A	IF, IHC-P, S-ELISA, WB
A010992	Anti-splicing factor 3b, subunit 2, 145kDa	ELISA, IF, IHC-P, WB
A006658	Anti-SRY (sex determining region Y)-box 3	ELISA, WB
A007884	Anti-stem-loop binding protein	ELISA, IF, WB
A006606	Anti-survival of motor neuron 1, telomeric	IF, IHC-P, S-ELISA, WB
A007150	Anti-topoisomerase (DNA) I	IHC-P, S-ELISA, WB
A007175	Anti-translocated promoter region (to activated MET oncogene)	IHC-P, S-ELISA, WB
A007756	Anti-zinc finger protein 207	ELISA, IF, IHC-P, WB

Abbreviations IF: Immunofluorescence, IHC-Fr: Immunohistochemistry (Frozen sections), IHC-P: Immunohistochemistry (Formalin/PFA-fixed paraffin-embedded sections), PLA: in situ Proximity Ligation Assay, RNA-Ab: RNAi Knockdown (Antibody validated), S-ELISA: Sandwich-ELISA, WB: Western Blot.

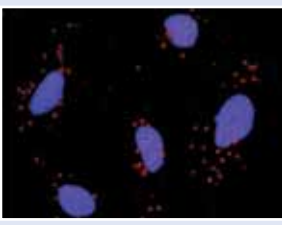
Transcription

Cat#	Description	Applications
A000467	Anti-activating transcription factor 3	RNAi-Ab,S-ELISA,WB
A000468	Anti-activating transcription factor 4 (tax-responsive enhancer element B67)	IF,S-ELISA,WB
A00 1385	Anti-cAMP responsive element binding protein 1	IHC-P,PLAS-ELISA,WB
A00 8531	Anti-cold shock domain protein A	IHC-P,S-ELISA,WB
A001406	Anti-cone-rod homeobox	RNAi-Ab,S-ELISA,WB
A002120	Anti-ets variant 6	IHC-P,S-ELISA,WB
A003170	Anti-forkhead box A2	IF,RNAi-Ab,S-ELISA,WB
A002624	Anti-GATA binding protein 2	IF,RNAi-Ab,S-ELISA,WB
A010725	Anti-nuclear factor of activated T-cells 5, tonicity-responsive	S-ELISA,WB
A008031	Anti-nuclear receptor coactivator 4	ELISA,WB
A004306	Anti-nuclear receptor subfamily 3, group C, member 2	ELISA,WB
A004899	Anti-nuclear respiratory factor 1	IHC-P,RNAi-Ab,S-ELISA,WB

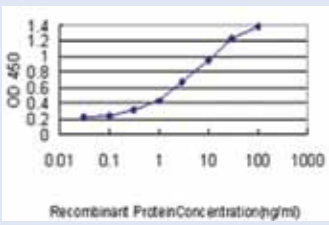
Cat#	Description	Applications
A005467	Anti-peroxisome proliferator-activated receptor delta (PPARD)	S-ELISA,WB



PPARD monoclonal antibody, clone 4E3-1B11, Western Blot analysis of PPARD expression in Jurkat cells.



Proximity Ligation Analysis (PLA) of protein-protein interactions between HDAC2 and PPARD HeLa cells were stained with anti-HDAC2 rabbit purified polyclonal 1:1200 and anti-PPARD mouse monoclonal antibody 1:50. Each red dot represents the detection of protein-protein interaction complex. Nuclei were counterstained with DAPI (blue).



Detection limit for recombinant GST tagged PPARD is approximately 0.03 ng/ml as a capture antibody.

Holloway, et. al. suggest that PPARD may be upregulated in response to the impairments in lipid oxidation associated with obesity. Antibodies to PPARD, MFN1 (Cat# A055669, see p. 3) and MFN2 (Cat# A009927, see p. 3) were used in Western blotting in this paper. *Am J Physiol Endocrinol Metab.* 2008 Jun;294(6):E1060-9

A010891	Anti-peroxisome proliferator-activated receptor gamma, coactivator 1 alpha	S-ELISA,WB
A000860	Anti-runt-related transcription factor 2	ELISA,IF,IHC-P,S-ELISA,WB
A000861	Anti-runt-related transcription factor 1	IF,IHC-P,S-ELISA,WB
A006667	Anti-Sp1 transcription factor	IF,IHC-P,S-ELISA,WB
A006662	Anti-SRY (sex determining region Y)-box 9	IF,IHC-P,S-ELISA,WB
A006722	Anti-serum response factor (c-fos serum response element-binding transcription factor)	IF,S-ELISA,WB
A006925	Anti-transcription factor 4	IF,S-ELISA,WB
A029128	Anti-ubiquitin-like with PHD and ring finger domains 1	IF,IHC-P,S-ELISA,WB
A007391	Anti-upstream transcription factor 1	IF,IHC-P,S-ELISA,WB
A007421	Anti-vitamin D (1,25- dihydroxyvitamin D3) receptor	IHC-P,S-ELISA
A007702	Anti-zinc finger protein 143	IF,IHC-P,S-ELISA,WB

New Monoclonal Antibodies!

High Specificity + High Sensitivity + Highly Qualified = Dependable Results

Antibody Specificity

Recombinant proteins are expressed from in vitro wheat germ system as immunogens for monoclonal antibody production. Such proteins mirror the conformation and folding of the native proteins in the eukaryotic biological system, unlike synthetic peptides and E. coli expressed proteins.

Antibody Sensitivity

Using a low dose immunization technique in combination with a proprietary adjuvant, high-titer antibody responses are generated against the immunogen. Typically, less than 10 µg/ml of antibody will detect the antigen in the assays described below.

Antibody Qualification

Those clones with greatest activity are selected using an ELISA. The antibody from selected clones is purified using Protein A chromatography and characterized.

The antibodies are qualified in four types of assays:

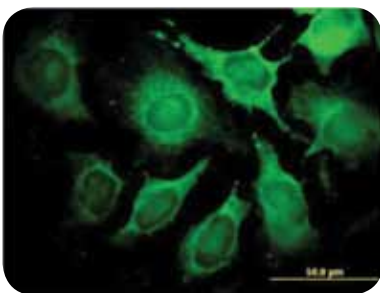
In this **Sandwich ELISA**, the monoclonal antibody is coated onto a microtiter plate. GST-coupled immunogen is added and bound immunogen is detected by peroxidase-conjugated rabbit antibody to GST.

The **Western blots** used to evaluate the antibody are performed using cell or tissue lysates. In some cases, the protein is expressed in transfected cells followed by detection of the protein in the lysate. Detection of the primary antibody is peroxidase-based with chemiluminiscence detection.

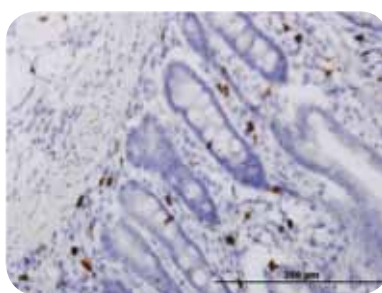
Immunohistochemistry is performed on formalin-fixed, paraffin-embedded tissues with detection by peroxidase-conjugated secondary antibody and DAB. Immunofluorescent detection uses fluorescein-conjugated rabbit secondary antibody.

Proximity Ligation Analysis (PLA) is a new method to study protein-protein interactions. PLA technology is capable of detecting single protein events such as protein interactions (e.g. protein dimerization) and modifications (e.g. protein phosphorylation).

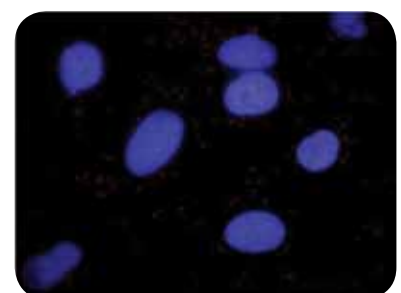
PLA offers an unprecedented level of sensitivity and specificity for protein detection in fixed cells and tissues. The assay provides exact spatial information on the location of the events and an objective means of quantifying the events.



Immunofluorescence



Immunohistochemistry

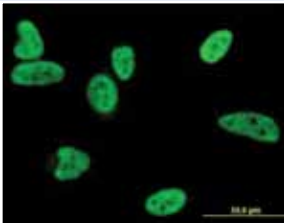
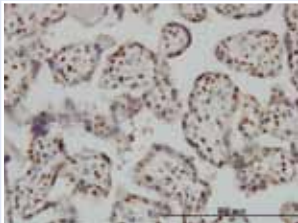


Proximity Ligation

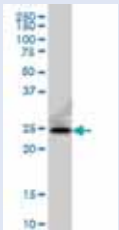
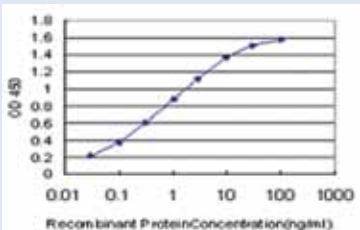
Abbreviations IF: Immunofluorescence, IHC-Fr: Immunohistochemistry (Frozen sections), IHC-P: Immunohistochemistry (Formalin/PFA-fixed paraffin-embedded sections), PLA: in situ Proximity Ligation Assay, RNAi: RNAi Knockdown (Antibody validated), S-ELISA: Sandwich-ELISA, WB: Western Blot.

Apoptosis

Cat#	Description	Applications
A000148	Anti-adrenergic, alpha-1A-, receptor	S-ELISA,WB
A000196	Anti-aryl hydrocarbon receptor	IF,RNAi-Ab,S-ELISA,WB
A000332	Anti-baculoviral IAP repeat-containing 5	IF,RNAi-Ab,S-ELISA,WB
A000356	Anti-Fas ligand (TNF superfamily, member 6)	IF,PLA-,S-ELISA

Cat#	Description	Applications
A000581	Anti-BCL2-associated X protein (BAX)	IF,IHC-P,PLA,WB
<div style="display: flex; justify-content: space-around; align-items: flex-start;"> <div style="text-align: center;">  <p><i>Immunofluorescence of monoclonal antibody to BAX on HeLa cell . [antibody concentration 10 µg/ml]</i></p> </div> <div style="text-align: center;">  <p><i>Immunoperoxidase of monoclonal antibody to BAX on formalin-fixed paraffin-embedded human placenta. [antibody concentration 3 µg/ml]</i></p> </div> </div>		

A000637	Anti-BH3 interacting domain death agonist	PLA,S-ELISA,WB
A000834	Anti-caspase 1, apoptosis-related cysteine peptidase, IL-1 α convertase	IHC-P,S-ELISA,WB
A000836	Anti-caspase 3, apoptosis-related cysteine peptidase	PLA,S-ELISA
A000842	Anti-caspase 9, apoptosis-related cysteine peptidase	IF,PLA,S-ELISA,WB
A001149	Anti-cell death-inducing DFFA-like effector a	ELISA,WB
A000708	Anti-complement component 1, q subcomponent binding protein	ELISA,S-ELISA
A001785	Anti-dynamin 2	S-ELISA,WB
A002056	Anti-erythropoietin	ELISA,WB

Cat#	Description	Applications
A008772	Anti-Fas (TNFRSF6)-associated via death domain (FADD)	S-ELISA,WB
<div style="display: flex; justify-content: space-around; align-items: flex-start;"> <div style="text-align: center;">  <p><i>FADD monoclonal antibody clone 3A12 Western Blot analysis of FADD expression in A-431 cells</i></p> </div> <div style="text-align: center;">  <p><i>Detection limit for recombinant GST tagged FADD is approximately 0.03ng/ml as a capture antibody.</i></p> </div> </div>		

A002309	Anti-forkhead box O3	IHC-P,PLA,S-ELISA
A003002	Anti-granzyme B (granzyme 2, cytotoxic T-lymphocyte-associated serine esterase 1)	ELISA,WB
A003440	Anti-interferon, alpha 2	ELISA,WB
A003956	Anti-lectin, galactoside-binding, soluble, 1	ELISA, IF,WB
A004976	Anti-optic atrophy 1 (autosomal dominant)	S-ELISA,WB
A005058	Anti-p21 protein (Cdc42/Rac)-activated kinase 1	IF,IHC-P,S-ELISA,WB
A005081	Anti-paired box 7	IHC-P,S-ELISA,WB
A007040	Anti-transforming growth factor, beta 1	ELISA,PLA

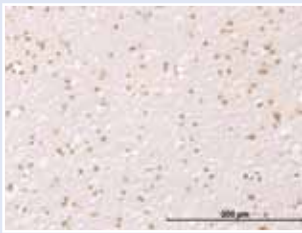
Apoptosis

Cat#	Description	Applications
A008740	Anti-tumor necrosis factor (ligand) superfamily, member 14	IHC-P,S-ELISA,WB
A008743	Anti-tumor necrosis factor (ligand) superfamily, member 10	ELISA,IHC-P,WB
A008767	Anti-receptor-interacting serine-threonine kinase 2	S-ELISA,WB
A008771	Anti-tumor necrosis factor receptor superfamily, member 6b, decoy	IHC-P,S-ELISA,WB
A009214	Anti-Fas apoptotic inhibitory molecule 3	S-ELISA,WB
A028996	Anti-homeodomain interacting protein kinase 2	S-ELISA,WB

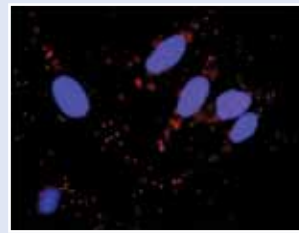
Ubiquitin

Cat#	Description	Applications
A000267	Anti-autocrine motility factor receptor	ELISA,WB
A000648	Anti-BMI1 polycomb ring finger oncogene	ELISA,WB
A001108	Anti-chromodomain helicase DNA binding protein 4	IHC-P,S-ELISA,WB
A377630	Anti-deubiquitinating enzyme 3	S-ELISA,WB
A055294	Anti-F-box and WD repeat domain containing 7	IHC-P,S-ELISA,WB
A003836	Anti-karyopherin alpha 1 (importin alpha 5)	IHC-P,S-ELISA,WB

Cat#	Description	Applications
A004193	Anti-Mdm2 p53 binding protein homolog (mouse) (MDM2)	IHC-P,PLA, RNAi-Ab,S-ELISA,WB



Immunoperoxidase of monoclonal antibody to MDM2 on formalin-fixed paraffin-embedded human cerebral cortex. [antibody concentration 1.5 µg/ml]



Proximity Ligation Analysis (PLA) of protein-protein interactions between TP53 and MDM2 HeLa cells were stained with anti-TP53 rabbit purified polyclonal 1:1200 and anti-MDM2 mouse monoclonal antibody 1:50. Each red dot represents the detection of protein-protein interaction complex. Nuclei were counterstained with DAPI (blue).

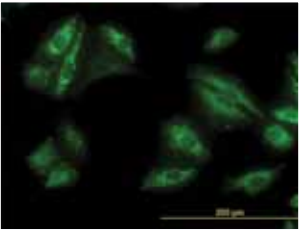
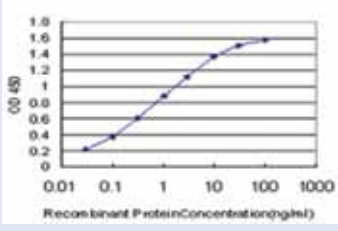
A005716	Anti-proteasome (prosome, macropain) 26S subunit, non-ATPase, 10	IF,IHC-P,S-ELISA,WB
A064326	Anti-ring finger and WD repeat domain 2	IF,S-ELISA,WB
A057630	Anti-SH3 domain containing ring finger 1	S-ELISA,WB
A010210	Anti-topoisomerase I binding, arginine/serine-rich	IF,IHC-P,S-ELISA,WB
A007314	Anti-ubiquitin B	IHC-P,S-ELISA,WB
A009100	Anti-ubiquitin specific peptidase 10	S-ELISA,WB
A055031	Anti-ubiquitin specific peptidase 47	IF,S-ELISA,WB
A011059	Anti-WW domain containing E3 ubiquitin protein ligase 1	ELISA,IF,IHC-P,WB

Abbreviations IF: Immunofluorescence, IHC-Fr: Immunohistochemistry (Frozen sections), IHC-P:Immunohistochemistry (Formalin/PFA-fixed paraffin-embedded sections), PLA: in situ Proximity Ligation Assay, RNA-Ab: RNAi Knockdown (Antibody validated), S-ELISA: Sandwich-ELISA, WB: Western Blot.

Signal Transduction

Cat#	Description	Applications
A000381	Anti-ADP-ribosylation factor 5 (ARF5)	IF,S-ELISA,WB
 <p><i>ARF5 monoclonal antibody, clone 1B4. Western Blot analysis of ARF5 expression in PC-12</i></p>  <p><i>Immunofluorescence of monoclonal antibody to ARF5 on HeLa cell. [antibody concentration 15 µg/ml]</i></p>		

A000409	Anti-arrestin, beta 2	IF,IHC-P,PLA,S-ELISA,WB
A008289	Anti-AT rich interactive domain 1A (SWI-like)	IF,S-ELISA,WB
A000684	Anti-bone marrow stromal cell antigen 2	S-ELISA,WB
A001673	Anti-defensin, beta 4	S-ELISA,WB
A002246	Anti-fibroblast growth factor 1 (acidic)	IF,PLA,S-ELISA,WB
A002669	Anti-GTP binding protein overexpressed in skeletal muscle	S-ELISA,WB
A003484	Anti-insulin-like growth factor binding protein 1	ELISA,WB
A010379	Anti-interferon regulatory factor 9	IHC-P,S-ELISA,WB
A002660	Anti-myostatin	ELISA,WB
A004838	Anti-nodal homolog (mouse)	IF,IHC-P,S-ELISA,WB
A011142	Anti-protein kinase (cAMP-dependent, catalytic) inhibitor gamma	ELISA,WB
A005873	Anti-RAB27A, member RAS oncogene family	IHC-P,RNAi-Ab,S-ELISA,WB
A010928	Anti-ralA binding protein 1	S-ELISA,WB
A009693	Anti-Rap guanine nucleotide exchange factor (GEF) 2	S-ELISA,WB
A000387	Anti-ras homolog gene family, member A	IHC-P,PLA, S-ELISA,WB
A006237	Anti-related RAS viral (r-ras) oncogene homolog	S-ELISA,WB
A006280	Anti-S100 calcium binding protein A9	IF,IHC-P,S-ELISA,WB

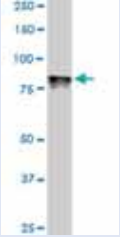
Cat#	Description	Applications
A008878	Anti-sequestosome 1 (SQSTM1)	IF,S-ELISA,WB
 <p><i>Immunofluorescence of monoclonal antibody to SQSTM1 on HeLa cell. [antibody concentration 10 µg/ml]</i></p>  <p><i>Detection limit for recombinant GST tagged SQSTM1 is approximately 0.03ng/ml as a capture antibody.</i></p>		

A006777	Anti-signal transducer and activator of transcription 5B	IF,IHC-P,S-ELISA,WB
A004088	Anti-SMAD family member 3	IHC-P,S-ELISA,WB
A057153	Anti-solute carrier family 44, member 2	IHC-P,S-ELISA,WB
A007124	Anti-tumor necrosis factor (TNF superfamily, member 2)	ELISA,IHC-P,PLA,WB
A007474	Anti-wingless-type MMTV integration site family, member 5A	ELISA

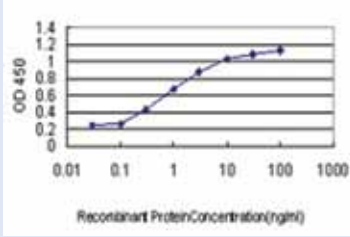
Enzyme Kinases/Phosphatases

Cat#	Description	Applications
A000093	Anti-activin A receptor, type IIB	S-ELISA,WB
A008536	Anti-calcium/calmodulin-dependent protein kinase I	S-ELISA,WB
A051755	Anti-Cdc2-related kinase, arginine/serine-rich	ELISA,IF,WB

Cat#	Description	Applications
A001859	Anti-dual-specificity tyrosine-(Y)-phosphorylation regulated kinase 1A (DYRK1A)	S-ELISA,WB



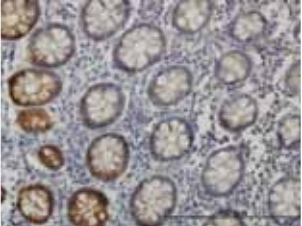
DYRK1A monoclonal antibody, clone 7D10. Western Blot analysis of DYRK1A expression in Raw 264.7.




Detection limit for recombinant GST tagged DYRK1A is approximately 0.03ng/ml as a capture antibody.

A002048	Anti-EPH receptor B2	ELISA,WB
---------	----------------------	----------

Cat#	Description	Applications
A002049	Anti-EPH receptor B3 (EPHB3)	IHC-P,S-ELISA,WB



Immunoperoxidase of monoclonal antibody to EPHB3 on formalin-fixed paraffin-embedded human colon. [antibody concentration 3 µg/ml]



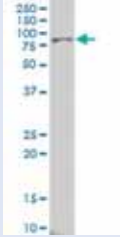
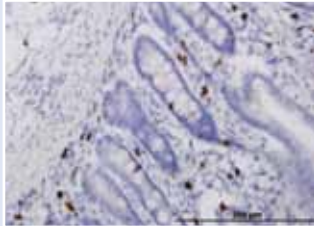
Western Blot analysis of EPHB3 expression in transfected 293T cell line by EPHB3 monoclonal antibody, clone 1B3. Lane 1: EPHB3 transfected lysate(110.3 KDa). Lane 2: Non-transfected lysate.

A002260	Anti-fibroblast growth factor receptor 1	PLA,S-ELISA,WB
A002263	Anti-fibroblast growth factor receptor 2	IHC-P,S-ELISA,WB
A003654	Anti-interleukin-1 receptor-associated kinase 1	IF,IHC-P,RNAi-Ab,S-ELISA,WB
A283455	Anti-kinase suppressor of ras 2	IF,S-ELISA,WB
A005599	Anti-mitogen-activated protein kinase 8	PLA,RNAi-Ab,WB
A005601	Anti-mitogen-activated protein kinase 9	IHC-P,RNAi-Ab,S-ELISA,WB
A009261	Anti-mitogen-activated protein kinase-activated protein kinase 2	IF,IHC-P,S-ELISA,WB
A005979	Anti-ret proto-oncogene	PLA,S-ELISA,WB
A006198	Anti-ribosomal protein S6 kinase, 70kDa, polypeptide 1	IF,IHC-P,S-ELISA,WB
A065975	Anti-serine/threonine kinase 33	ELISA,IF,RNAi-Ab,WB
A023678	Anti-serum/glucocorticoid regulated kinase family, member 3	IF,S-ELISA,WB
A008773	Anti-synaptosomal-associated protein, 23kDa	IHC-P,S-ELISA,WB
A010155	Anti-tripartite motif-containing 28 (TRIM28)	ELISA,IF,IHC-P,WB
A007010	Anti-TEK tyrosine kinase, endothelial	S-ELISA,WB
A005756	Anti-twinfilin, actin-binding protein, homolog 1 (Drosophila)	IHC-P,S-ELISA,WB
A000027	Anti-v-abl Abelson murine leukemia viral oncogene homolog 2 (arg, Abelson-related gene)	PLA,RNAi-Ab,S-ELISA,WB

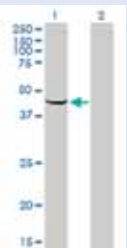
Abbreviations IF: Immunofluorescence, IHC-Fr: Immunohistochemistry (Frozen sections), IHC-P:Immunohistochemistry (Formalin/PFA-fixed paraffin-embedded sections), PLA: in situ Proximity Ligation Assay, RNA-Ab: RNAi Knockdown (Antibody validated), S-ELISA: Sandwich-ELISA, WB: Western Blot.

Metabolism

Cat#	Description	Applications
A000050	Anti-aconitase 2, mitochondrial	S-ELISA
A000108	Anti-adenylate cyclase 2 (brain)	PLA-Ce,S-ELISA

Cat#	Description	Applications
A000246	Anti-arachidonate 15-lipoxygenase (ALOX15)	IHC-P,S-ELISA,WB-Ce,WB-Re
 <p><i>ALOX15 monoclonal antibody, clone 3D8 Western Blot analysis of ALOX15 expression in HeLa NE</i></p>  <p><i>Immunoperoxidase of monoclonal antibody to ALOX15 on formalin-fixed paraffin-embedded human small Intestine. [antibody concentration 1.5 µg/ml]</i></p>		

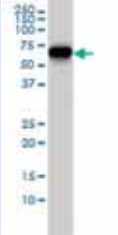
A000761	Anti-carbonic anhydrase III, muscle specific	IHC-P,S-ELISA,WB-Ce,WB-Re
A084701	Anti-cytochrome c oxidase subunit IV isoform 2 (lung)	ELISA,IHC-P,WB-Re,WB-Tr
A001606	Anti-diacylglycerol kinase, alpha 80kDa	PLA-Ce
A001719	Anti-dihydrofolate reductase	IF,S-ELISA,WB-Ce,WB-Re,WB-Tr
A009583	Anti-ectonucleoside triphosphate diphosphohydrolase 4	S-ELISA,WB-Re
A002752	Anti-glutamate-ammonia ligase (glutamine synthetase)	ELISA,IHC-P,S-ELISA,WB-Ce,WB-Re
A002597	Anti-glyceraldehyde-3-phosphate dehydrogenase	S-ELISA,WB
A003251	Anti-hypoxanthine phosphoribosyltransferase 1	ELISA,S-ELISA,WB-Ce,WB-Re
A008654	Anti-phosphodiesterase 5A, cGMP-specific	ELISA,WB-Re
A005213	Anti-phosphofructokinase, muscle	ELISA,WB-Ce,WB-Re
A005319	Anti-phospholipase A2, group IB (pancreas)	ELISA,S-ELISA,WB-Re
A005335	Anti-phospholipase C, gamma 1	ELISA,IF,PLA-Ce,S-ELISA,WB-Ce,WB-Re
A005315	Anti-pyruvate kinase, muscle	ELISA,WB-Ce,WB-Re
A051156	Anti-serpin peptidase inhibitor, clade A (alpha-1 antitrypsin), member 10	S-ELISA,WB-Re,WB-Tr
A001992	Anti-serpin peptidase inhibitor, clade B (ovalbumin), member 1	ELISA,WB-Re
A005270	Anti-serpin peptidase inhibitor, clade E (nexin, plasminogen activator inhibitor type 1), member 2	S-ELISA,WB
A000871	Anti-serpin peptidase inhibitor, clade H (heat shock protein 47), member 1, (collagen binding protein 1)	IHC-P,S-ELISA,WB-Ce,WB-Re

Cat#	Description	Applications
A008877	Anti-sphingosine kinase 1 (SPHK1)	S-ELISA,WB-Ce,WB-Re,WB-Tr
 <p><i>Western Blot analysis of SPHK1 expression in transfected 293T cell line by SPHK1 monoclonal antibody, clone 1D6. Lane 1: SPHK1 transfected lysate(43.9 KDa). Lane 2: Non-transfected lysate.</i></p>		

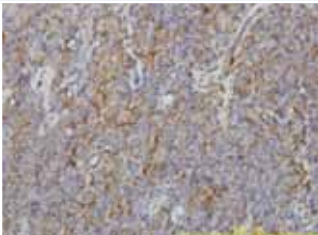
Cell Adhesion

Cat#	Description	Applications
A000060	Anti-actin, beta	IHC-P,S-ELISA,WB
A000165	Anti-AE binding protein 1	IHC-P,S-ELISA,WB
A000176	Anti-aggrecan	S-ELISA,WB
A000214	Anti-activated leukocyte cell adhesion molecule	ELISA,WB
A000324	Anti-adenomatous polyposis coli	PLA,S-ELISA,WB
A000945	Anti-CD33 molecule	RNAi-Ab,S-ELISA,WB
A000999	Anti-cadherin 1, type 1, E-cadherin (epithelial)	ELISA,IHC-P,PLA,WB
A001000	Anti-cadherin 2, type 1, N-cadherin (neuronal)	ELISA,WB
A001490	Anti-connective tissue growth factor	ELISA,WB
A001495	Anti-catenin (cadherin-associated protein), alpha 1, 102kDa	PLA,S-ELISA,WB
A001524	Anti-chemokine (C-X3-C motif) receptor 1	S-ELISA,WB
A001277	Anti-collagen, type I, alpha 1	ELISA,WB
A001280	Anti-collagen, type II, alpha 1	S-ELISA,WB
A007373	Anti-collagen, type XIV, alpha 1	ELISA,WB

Cat#	Description	Applications
A057175	Anti-coronin, actin binding protein, 1B (CORO1B)	IHC-P,S-ELISA,WB



CORO1B monoclonal antibody, clone 1E7 Western Blot analysis of CORO1B expression in HeLa NE



Immunoperoxidase of monoclonal antibody to CORO1B on formalin-fixed paraffin-embedded human lymphoma tissue. [antibody concentration 3µg/ml]

A002022	Anti-endoglin	S-ELISA,WB
A002358	Anti-formyl peptide receptor 2	S-ELISA,WB
A002811	Anti-glycoprotein Ib (platelet), alpha polypeptide	S-ELISA,WB
A002833	Anti-chemokine (C-X-C motif) receptor 3	ELISA,WB
A003026	Anti-hyaluronan binding protein 2	S-ELISA
A003371	Anti-tenascin C	S-ELISA,WB
A003558	Anti-interleukin 2	ELISA,WB
A003728	Anti-junction plakoglobin	IF,IHC-P,S-ELISA,WB
A003911	Anti-laminin, alpha 5	S-ELISA,WB
A004318	Anti-matrix metalloproteinase 9 (gelatinase B, 92kDa type IV collagenase)	ELISA,IF,PLA,WB
A004099	Anti-myelin associated glycoprotein	ELISA,WB
A004684	Anti-neural cell adhesion molecule 1	ELISA,WB
A005217	Anti-profilin 2	S-ELISA,WB
A005754	Anti-PTK7 protein tyrosine kinase 7	IF,S-ELISA,WB
A203068	Anti-tubulin, beta	ELISA,WB
A007414	Anti-vinculin	ELISA,IF,WB
A007450	Anti-von Willebrand factor	ELISA,WB
A007802	Anti-dynein, axonemal, light intermediate chain 1	ELISA,WB

Abbreviations IF: Immunofluorescence, IHC-Fr: Immunohistochemistry (Frozen sections), IHC-P:Immunohistochemistry (Formalin/PFA-fixed paraffin-embedded sections), PLA: in situ Proximity Ligation Assay, RNA-Ab: RNAi Knockdown (Antibody validated), S-ELISA: Sandwich-ELISA, WB: Western Blot.

Cell Membrane

Cat#	Description	Applications
Membrane Ion Channels		
A001181	Anti-chloride channel 2	ELISA, RNAi-Ab, WB
A001138	Anti-cholinergic receptor, nicotinic, alpha 5	ELISA, WB
A001140	Anti-cholinergic receptor, nicotinic, beta 1 (muscle)	ELISA, WB
A002890	Anti-glutamate receptor, ionotropic, AMPA 1	S-ELISA, WB
A002904	Anti-glutamate receptor, ionotropic, N-methyl D-aspartate 2B	ELISA, S-ELISA, WB
A023327	Anti-neural precursor cell expressed, developmentally down-regulated 4-like	ELISA, WB
A004852	Anti-neuropeptide Y	S-ELISA, WB
A005174	Anti-PDZ domain containing 1	IHC-P, S-ELISA, WB
A003753	Anti-potassium voltage-gated channel, Isk-related family, member 1	RNAi-Ab, S-ELISA, WB
A006334	Anti-sodium channel, voltage gated, type VIII, alpha subunit	ELISA, IF, WB
A007416	Anti-voltage-dependent anion channel 1	S-ELISA, WB
A007417	Anti-voltage-dependent anion channel 2	ELISA, WB
Membrane Receptors		
A000567	Anti-beta-2-microglobulin	IF, IHC-P, PLA, RNAi-Ab, S-ELISA, WB
A002205	Anti-Fc fragment of IgE, high affinity I, receptor for; alpha polypeptide	ELISA, RNAi-Ab, WB
A002550	Anti-gamma-aminobutyric acid (GABA) B receptor, 1	IF, RNAi-Ab, S-ELISA, WB
A004854	Anti-Notch homolog 3 (Drosophila)	S-ELISA, WB
A004092	Anti-SMAD family member 7	S-ELISA, WB
Membrane Transport		
A006868	Anti-ADAM metallopeptidase domain 17	IHC-P, PLA, S-ELISA, WB
A000489	Anti-ATPase, Ca ⁺⁺ transporting, ubiquitous	IHC-P, S-ELISA, WB
A003949	Anti-low density lipoprotein receptor	S-ELISA, WB
A004891	Anti-solute carrier family 11 (proton-coupled divalent metal ion transporters), member 2	ELISA, IHC-P, WB
A001836	Anti-solute carrier family 26 (sulfate transporter), member 2	ELISA, WB
A007099	Anti-toll-like receptor 4	RNAi-Ab, S-ELISA, WB
A002064	Anti-v-erb-b2 erythroblastic leukemia viral oncogene homolog 2, neuro/glioblastoma derived oncogene homolog (avian)	ELISA, PLA, WB



Find all 55,000 of our products online at www.mpbio.com

Take advantage of our E-commerce Website:

- Complete Product Listing
- Real Time Availability of Products
- Product information including Properties, C of A's and MSDS's
- Easy & Quick Purchasing System
- Live Chat
- Advanced Search Capabilities

Avoid waiting, order your antibodies at www.mpbio.com

Cell Cycle

Cat#	Description	Applications
A0 10735	Anti-stromal antigen 2	ELISA,IF,IHC-P,WB
A000558	Anti-AXL receptor tyrosine kinase	RNAi-Ab,S-ELISA,WB
A001027	Anti-cyclin-dependent kinase inhibitor 1B (p27, Kip1)	IF,IHC-P,PLA,S-ELISA,WB
A001070	Anti-centrin, EF-hand protein, 3 (CDC31 homolog, yeast)	RNAi-Ab,S-ELISA,WB
A001848	Anti-dual specificity phosphatase 6	IF,IHC-P,RNAi-Ab,S-ELISA,WB
A002271	Anti-fumarate hydratase	IF,S-ELISA,WB
A002896	Anti-granulin	IF,S-ELISA,WB
A003099	Anti-hexokinase 2	S-ELISA,WB
A003148	Anti-high-mobility group box 2	IF,IHC-P,S-ELISA,WB
A003306	Anti-heat shock 70kDa protein 2	IHC-P,S-ELISA,WB
A003489	Anti-insulin-like growth factor binding protein 6	S-ELISA,WB
A003569	Anti-interleukin 6 (interferon, beta 2)	ELISA,WB
A003833	Anti-kinesin family member C1	IF,IHC-P,S-ELISA,WB
A004041	Anti-low density lipoprotein receptor-related protein 5	IF,IHC-P,S-ELISA,WB
A004609	Anti-v-myc myelocytomatosis viral oncogene homolog (avian)	ELISA,IHC-P,WB
A004831	Anti-non-metastatic cells 2, protein (NM23B) expressed in	RNAi-Ab,S-ELISA,WB
A004926	Anti-nuclear mitotic apparatus protein 1	IF,S-ELISA,WB
A005245	Anti-prohibitin	IF,IHC-P,S-ELISA,WB
A005291	Anti-phosphoinositide-3-kinase, catalytic, beta polypeptide	ELISA,IHC-P,PLA,WB
A005744	Anti-parathyroid hormone-like hormone	IF,IHC-P,S-ELISA,WB
A253260	Anti-rapamycin-insensitive companion of mTOR	IHC-P,S-ELISA,WB
A005997	Anti-regulator of G-protein signaling 2, 24kDa	IHC-P,S-ELISA,WB
A006240	Anti-ribonucleotide reductase M1	S-ELISA,WB
A006277	Anti-S100 calcium binding protein A6	IF,IHC-P,S-ELISA,WB
A006786	Anti-stromal interaction molecule 1	IF,IHC-P,S-ELISA,WB
A009314	Anti-Kruppel-like factor 4 (gut)	ELISA,WB
A010673	Anti-tumor necrosis factor (ligand) superfamily, member 13b	ELISA,WB
A011140	Anti-cell division cycle 37 homolog (S. cerevisiae)	IF,IHC-P,S-ELISA,WB
A023435	Anti-TAR DNA binding protein	ELISA,IF,IHC-P,RNAi-Ab,WB



Check out our **NEW Antibody Navigator** at www.mpbio.com/mAb

Quickly and easily search over 5,000 NEW antibodies to human proteins.

Search by:

- Gene ID or Name

- Protein Name

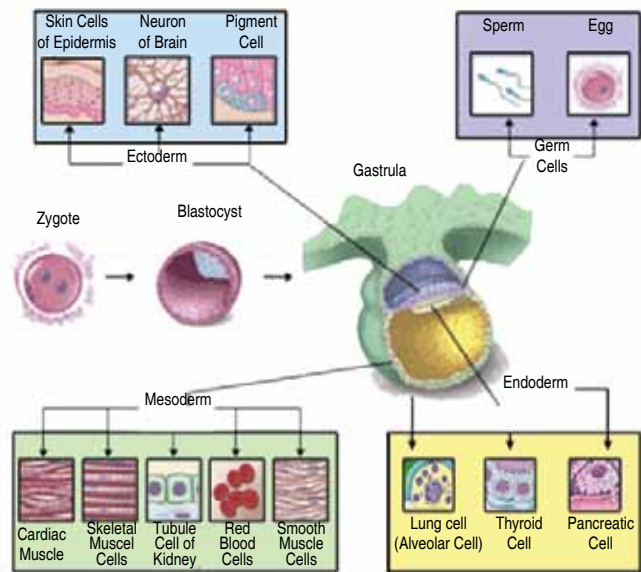
- Research Area

Use Antibody Navigator to find complete product descriptions, along with application information to select the best antibody for your needs.

Differentiation Markers for Stem Cell Research

Monoclonal antibodies offered to:

- Nestin
- Neurofilaments
- GFAP
- Reticulons
- NCAM
- Cytokeratins
- Cadherins
- Integrins



Check out our NEW Antibody Navigator at www.mpbio.com/mAb

Quickly and easily search over 5,000 NEW antibodies to human proteins.

- Search by:
- Gene ID or Name
 - Protein Name
 - Research Area

Use Antibody Navigator to find complete product descriptions, along with application information to select the best antibody for your needs.

EUROPEAN FREE PHONE N°

00800.7777.9999

France

Tel: 03 88 67 54 25
Fax: 03 88 67 19 45
E-mail: custserv.fr@mpbio.com

Germany

Tel: 0800 426 67 337
Fax: 0800 629 67 337
E-mail: custserv.de@mpbio.com

The Netherlands

Tel: 0800 0227 416
Fax: 0800 0227 489
E-mail: custserv.nl@mpbio.com

Belgium

Tel: 02 466 00 00
Fax: 02 466 26 42
E-mail: custserv.be@mpbio.com

Switzerland

Tel: 061 271 0007
Fax: 061 271 0084
E-mail: custserv.ch@mpbio.com

United Kingdom

Tel: 0800 282 474
Fax: 0800 614 735
E-mail: custserv.uk@mpbio.com

www.mpbio.com/antibodies

